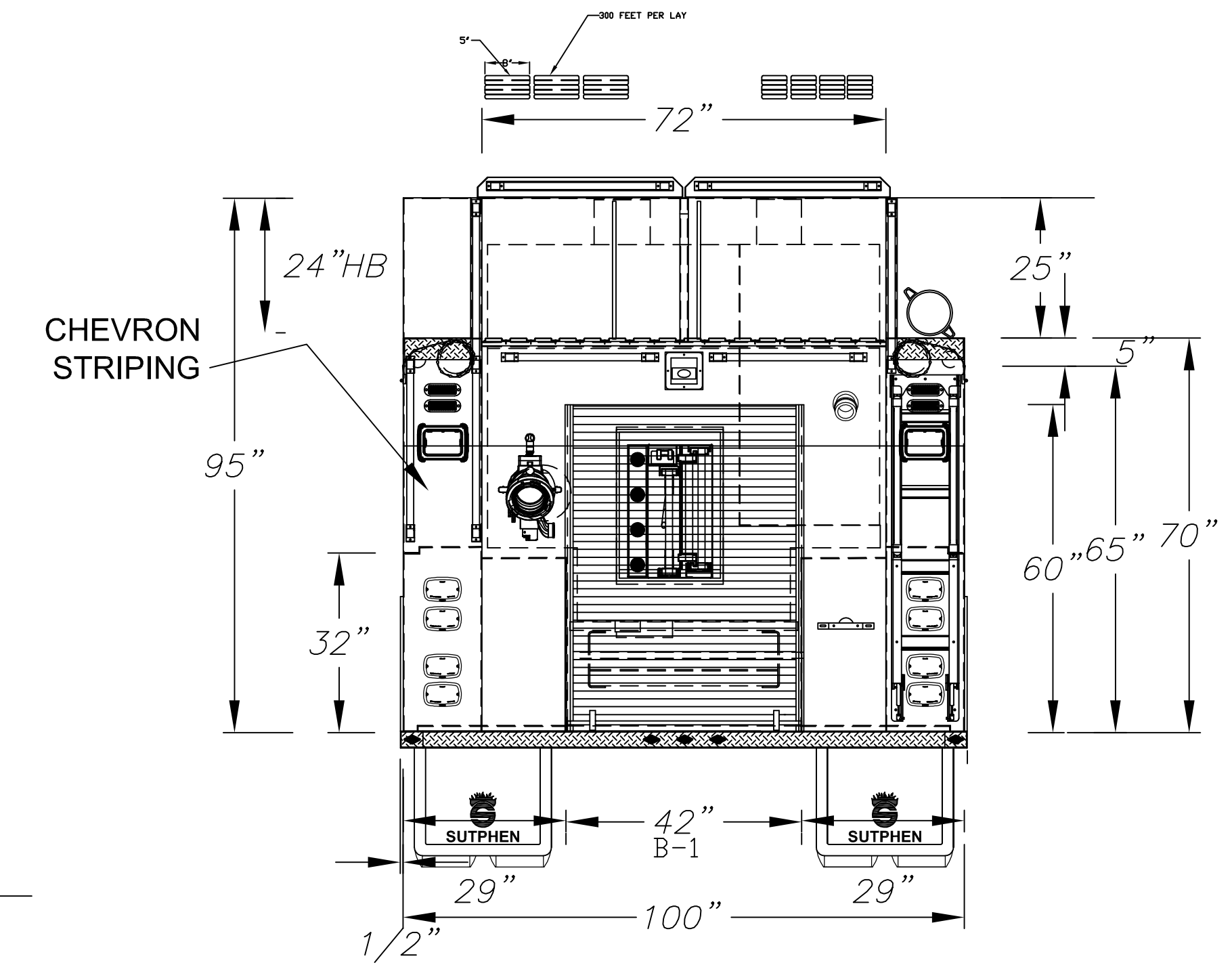
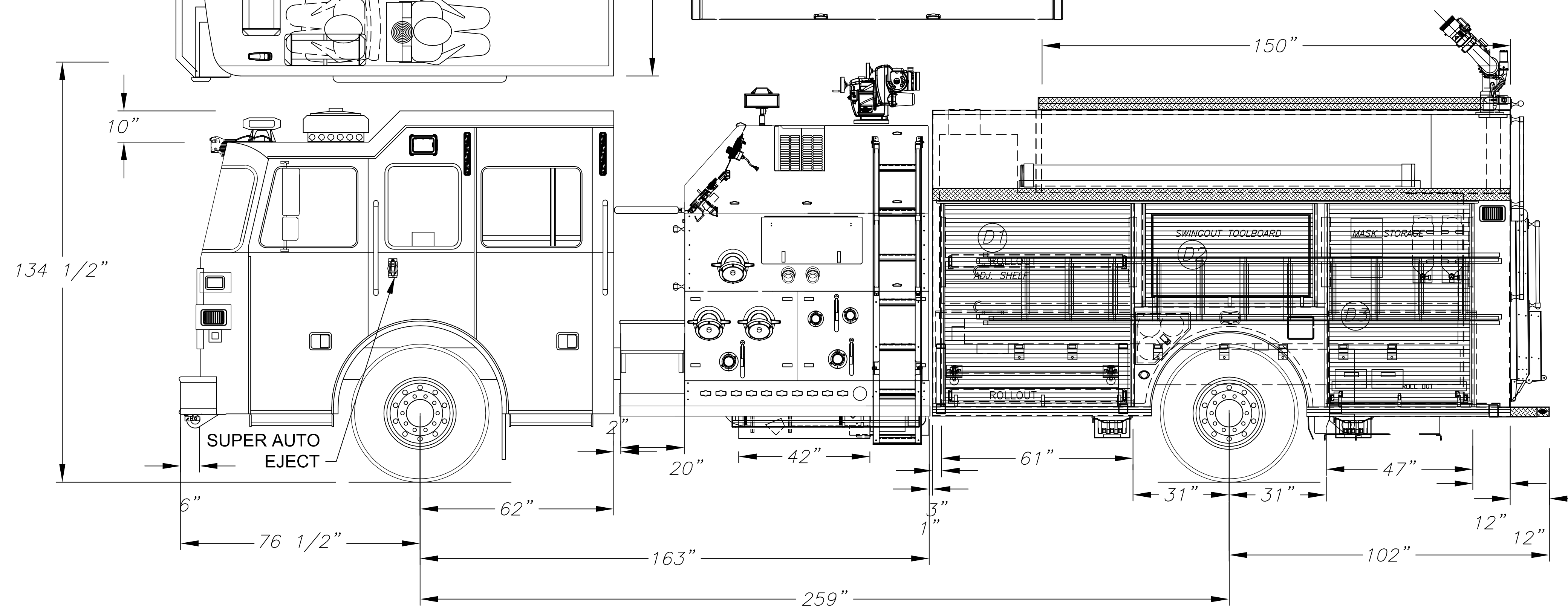
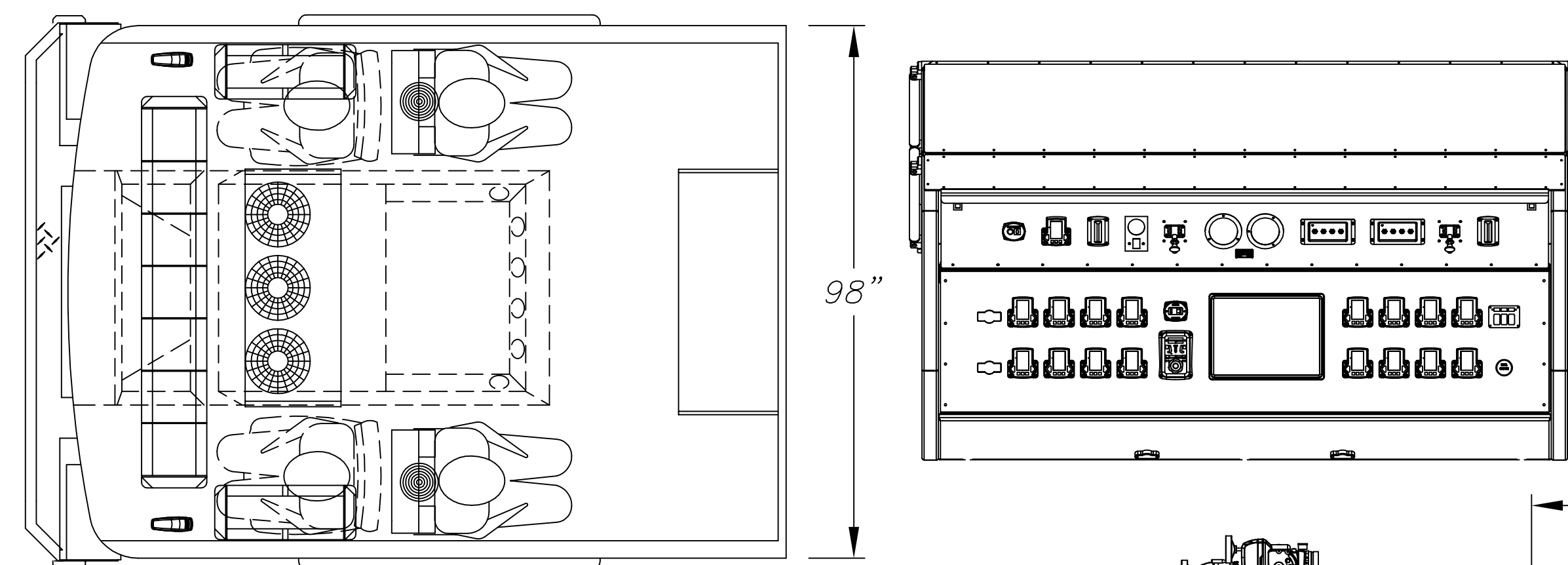


LEFT SIDE COMPARTMENTATION				
COMPT	DOORS	OPENING DIMENSIONS	INSIDE DIMENSIONS	VOLUME
D1	ROLL-UP	58" w X 61" h	58" w X 61" h X 13/27" d	38 CU. FT.
D2	ROLL-UP	53" w X 29" h	53" w X 29" h X 13" d	12 CU. FT.
D3	ROLL-UP	44" w X 61" h	47" w X 61" h X 13/27" d	33 CU. FT.

RIGHT SIDE COMPARTMENTATION				
COMPT	DOORS	OPENING DIMENSIONS	INSIDE DIMENSIONS	VOLUME
P1	ROLL-UP	58" w X 61" h	58" w X 61" h X 13/27" d	38 CU. FT.
P2	ROLL-UP	53" w X 29" h	53" w X 29" h X 13" d	12 CU. FT.
P3	ROLL-UP	44" w X 61" h	47" w X 61" h X 13/27" d	33 CU. FT.

REAR STEP COMPARTMENTS				
COMPT	DOORS	OPENING DIMENSIONS	INSIDE DIMENSIONS	VOLUME
B1	ROLL-UP	39" w X 56" h	39" w X 56" h X 14" d	17 CU. FT.



THIS PRINT IS PROVIDED ON A RESTRICTED BASIS AND IS NOT TO BE USED IN ANY WAY DETRIMENTAL TO THE INTEREST OF SUTPHEN CORPORATION.

**SUTPHEN CORPORATION**  
FIRE APPARATUS SINCE 1890  
7000 COLUMBUS-MARYSVILLE ROAD  
AMLIN, OHIO 43002

DR. \_\_\_\_\_ NO. REQ'D. \_\_\_\_\_  
DATE \_\_\_\_\_ DWG. NO. \_\_\_\_\_  
SCALE TOL. \_\_\_\_\_  
NONE

3000GPM/1000 GAL FOAM  
500 GAL WATER  
SHELL POLYMERS

THE INFORMATION PRESENTED ON THIS DOCUMENT IS TO BE USED FOR ILLUSTRATIVE PURPOSES ONLY AND IT MAY NOT REFLECT, AESTHETICALLY OR OTHERWISE, PAST OR PRESENT MANUFACTURED PRODUCTS. SUTPHEN CORPORATION RESERVES THE RIGHT TO MAKE CHANGES IN THE DESIGN OF OUR PRODUCTS AT ANY TIME, WITHOUT NOTIFICATION.

The undersigned approves this data for construction in accordance with any changes as indicated on these drawings.

APPROVED BY: \_\_\_\_\_ DATE: \_\_\_\_\_  
(Authorized Fire Dept. Representative)

SALES REPRESENTATIVE: \_\_\_\_\_ DATE: \_\_\_\_\_

REV.	DESCRIPTION	JC	2-26-19
B			
A			